

Industrial heritage in the Polar areas – The modern whaling industry in the Arctic and Antarctic



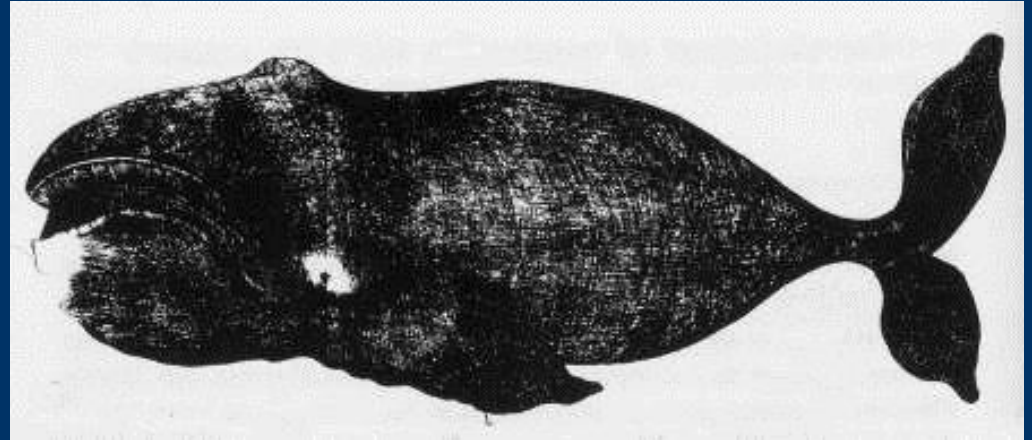
# Arctic and Antarctic



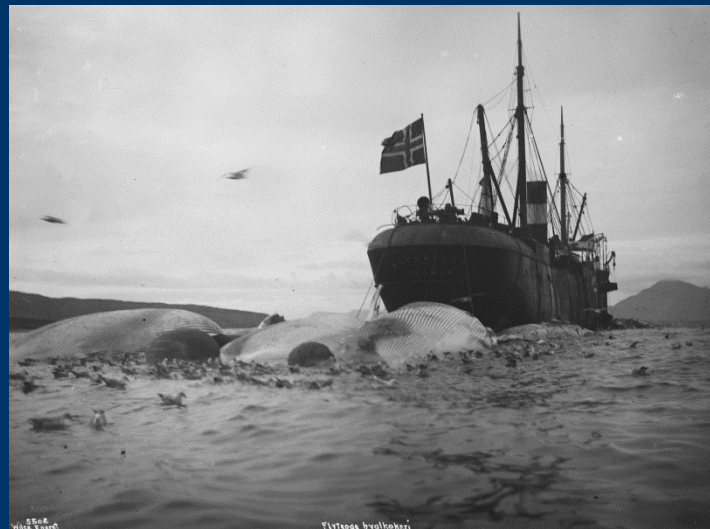
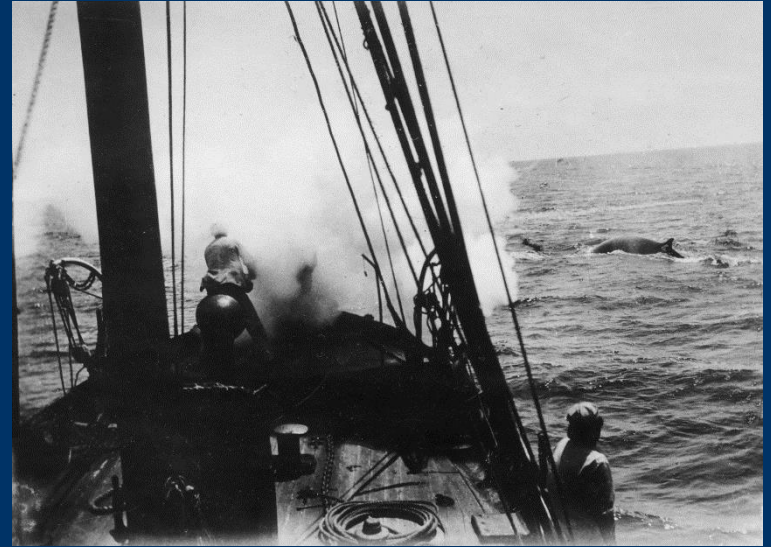
# Arctic and Antarctic



# Brief history of exploitation



# Introduction



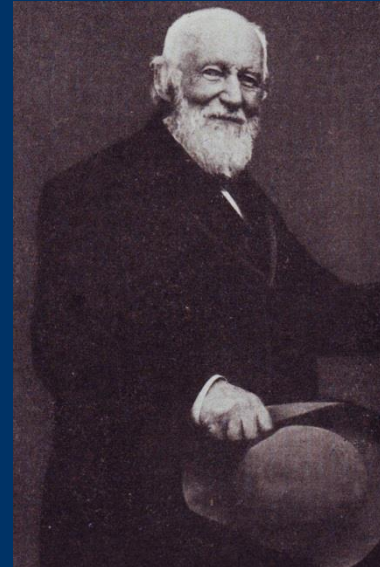
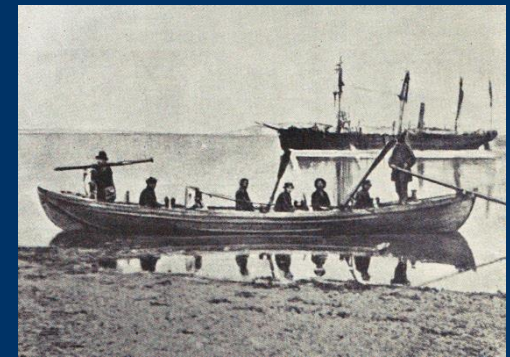
# What is «modern» whaling

- Technological system
- Steam propulsion
- Specie diversification
- Organisation of production
- Full utilization of resource



# Modern whaling; 1860–1904

- Early developments – technologies
- Svend Foyn – system builder
- Large scale exploitation – globalisation process
- Conflicts



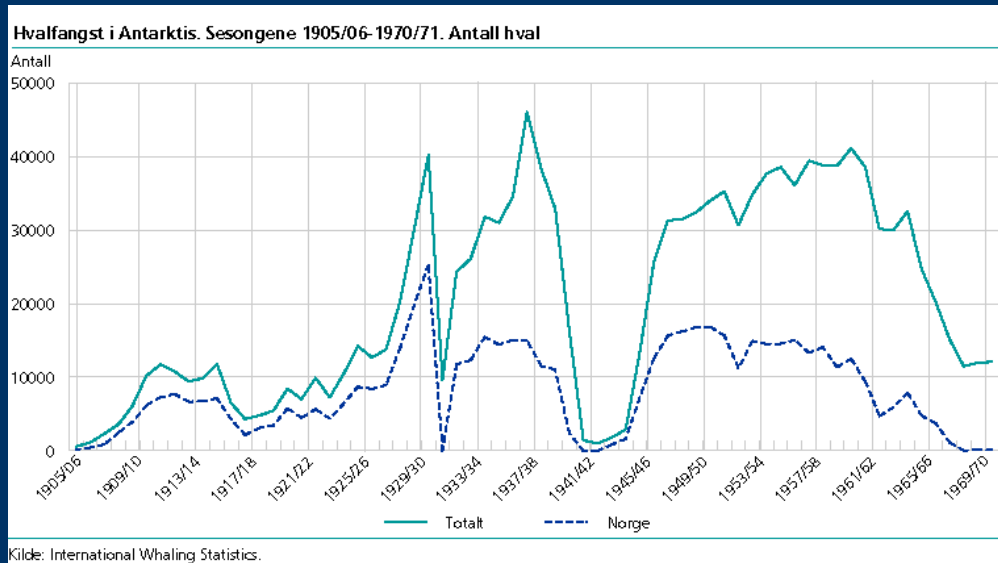
# Modern whaling; 1905–1971

- Expansion into the Polar areas
- From industrial production to large scale
- From whaling-stations to pelagic whaling
- Over-exploitation and collapse
- Low production during WW2
- New actors in whaling
- The introduction of bans
- NGO

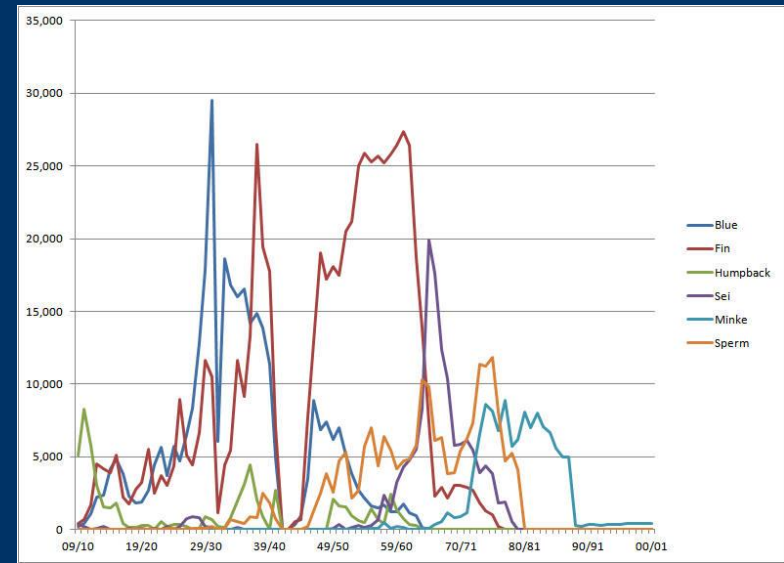




# Catches 1905-1971



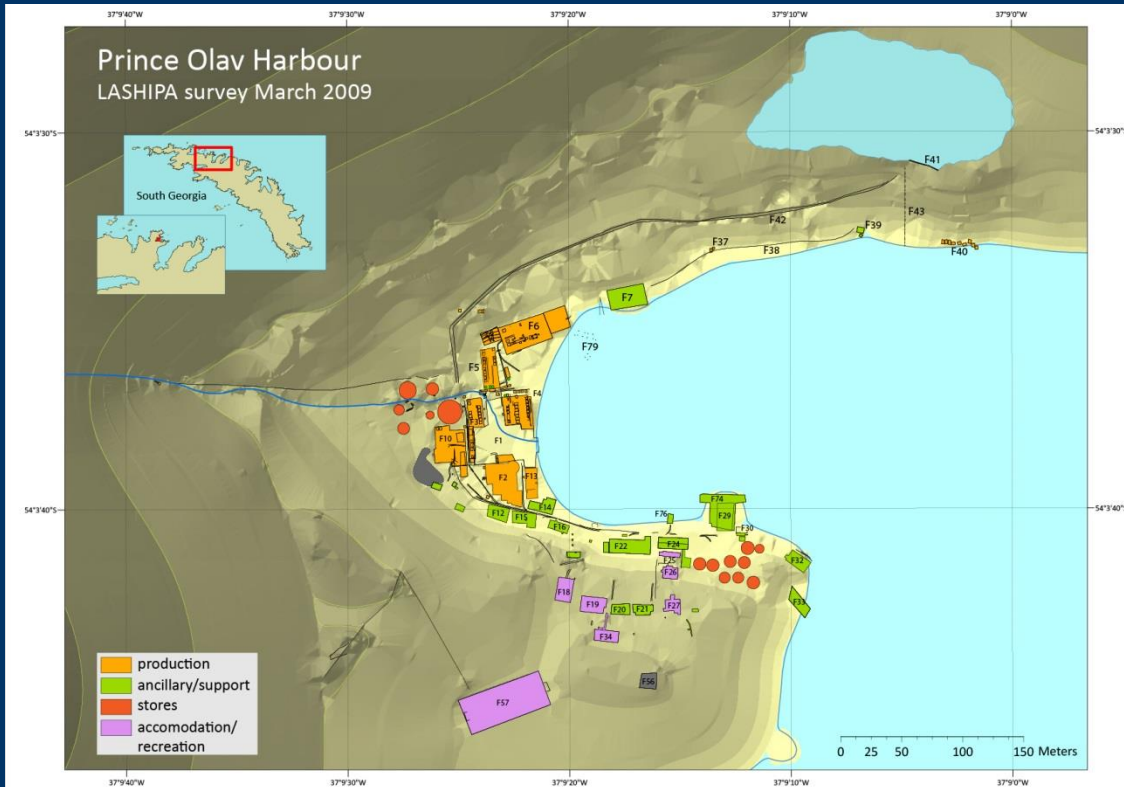
Whales caught in Antarctica 1905-1971



Distribution of species caught  
By the whaling industry



# Industrial heritage & research



# Industrial heritage & research



# International cooperation & comparative perspectives



Thank you for your attention!

