

# The National Heritage Institute: Specialized governmental HERITAGE INSTITUTION

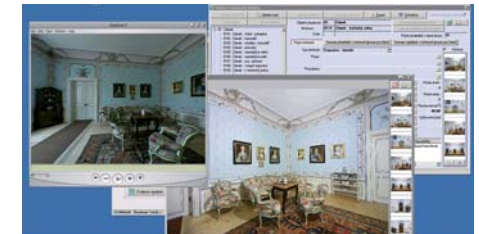
The National Heritage Institute has been established by the Ministry of Culture as a specialized organization aimed at two basic conservation activities. In addition to the management of a unique set of heritage sites, the Institute performs expert activities as defined by the National Conservation Act. Apart from maintaining the Central Heritage Registry and records of the heritage sites, the National Heritage Institute provides methodological assistance to the owners of facilities, aimed at conservation and restoration, and also provides expert statements for the government. The Institute also performs archaeological surveys, historic research etc., and provides statements necessary for sales or export of

sacral items of significant cultural value. The Institute also monitors the illegal trade in antiquities in the Czech Republic and abroad. Therefore, it follows up on the legacy of its predecessors, such as the State Heritage Institute established in 1918, and develops it further.

With its current structure, the Institute attempts at maintaining traditional values, and strengthening the knowledge of important aspects of the national history in the European context; it also contributes to the social and cultural identity, and provides important boost of the local economy through the support of tourism.

The National Heritage Institute also actively provides many other services, such as educational programs for the general public. It emphasizes the importance of education in construction and related crafts, and supports the application of traditional craftsmanship and technologies. Important are also the activities in research and development, and so is the application of modern filing techniques, restoration and presentation of the assets.

The National Heritage Institute is an organization that fully applies and supports the sharing of expert experiences in conservation among various national and international institutions.



**NATIONAL  
HERITAGE  
INSTITUTE**

